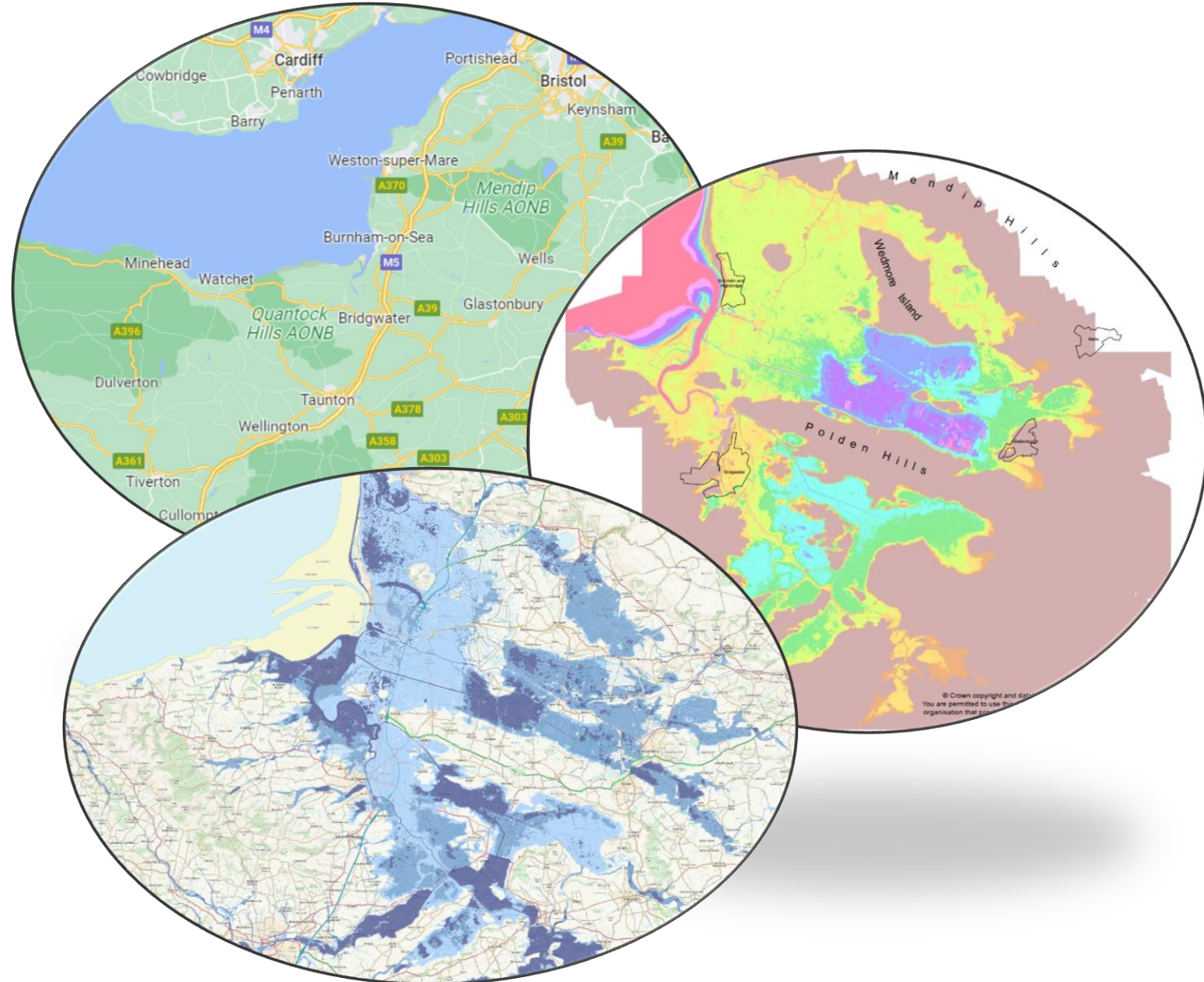


Act to Adapt

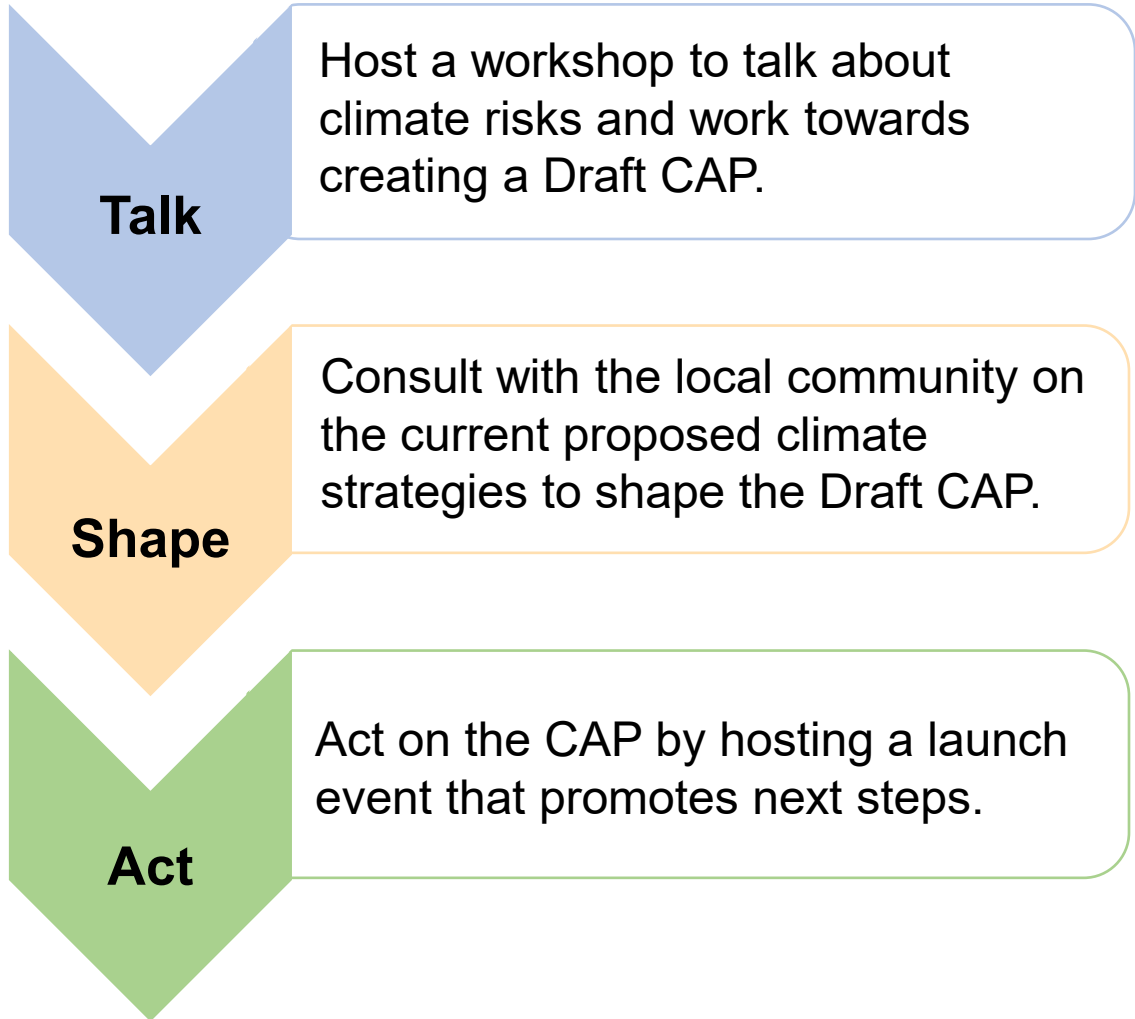
Somerset

Why Community Adaptation?

- Somerset faces significant climate vulnerability: a long coastline, flood-prone lowlands, and socioeconomic pressures that limit adaptive capacity.
- Most climate action is top-down. Communities often feel powerless and lack accessible processes to develop their own adaptation strategies.
- Somerset Wildlife Trust stepped in to fill this gap.

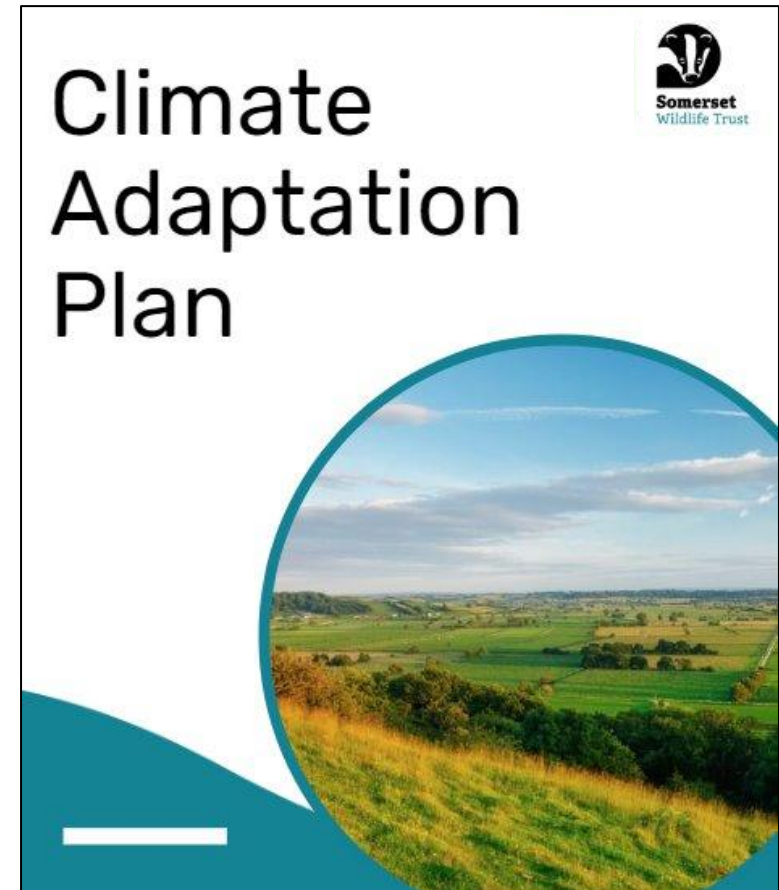


Our Process

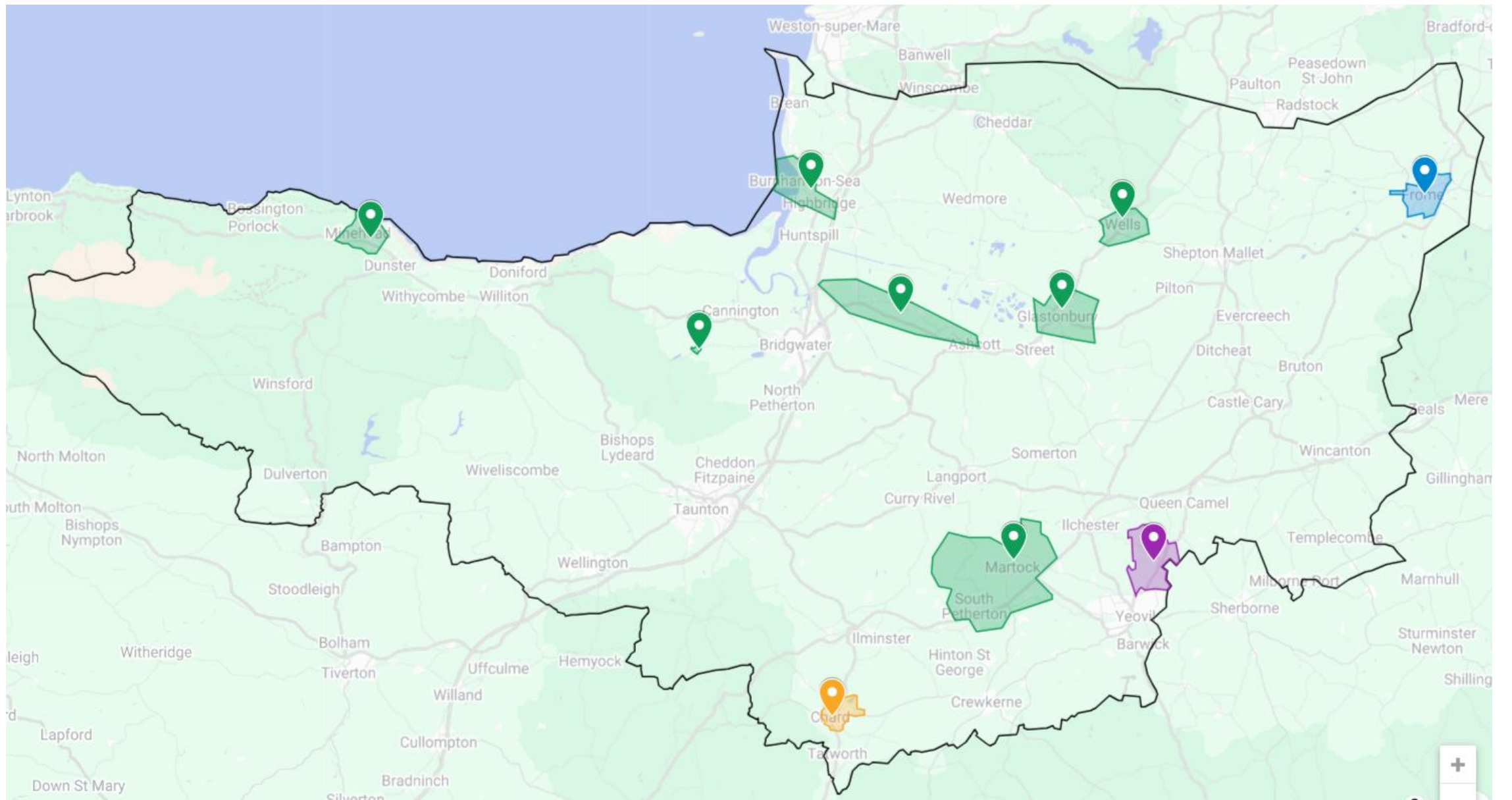


Our Objective

To work with the local community and create a comprehensive **Climate Adaptation Plan (CAP)**.







Plans are available to view at:

www.somersetwildlife.org/act-to-adapt

Impact at a Glance



1,800+

People Engaged



8

Climate Adaptation
Plans Completed



10

Somerset
Communities



£1,000

Seed Funding
Per Community

Every plan is community-owned and designed to be a living document.

Engagement methods include public workshops, in-person consultations at local events like flower shows, and online surveys, ensuring we reach beyond the usual voices.

Case Study: Minehead

Coastal community, West Somerset



147

People
Engaged

24

Workshop
Attendees

78

Consultation
Responses

45

Launch
Attendees

Community Priorities

-  **1 Improving and increasing green spaces**
-  **2 Adapting to flooding**
-  **3 Encouraging community-driven climate action**
-  **4 Promoting sustainable development**

Impact

A Green Action Group has been set up to implement the plan, meeting every other month and planning projects across West Somerset.

Launched with MP Rachel Gilmour showing support.

Minehead and Coast Development Trust now connecting with Town Council, FWAG, Flood Group and Somerset Council.

Case Study: Glastonbury

Market town, Somerset Levels



169

People
Engaged

28

Workshop
Attendees

80

Consultation
Responses

61

Launch
Attendees

Community Priorities

1



Planting more trees and plants

2



Adapting to flooding

3



Installing green walls and roofs

4



Engaging with local planning

Impact

Workshops at Bridie's Farm are teaching residents to create rain gardens and green roofs.

The roundhouse semi-permeable pathways to reduce surface water runoff at Bridie's Farm is being used as a showcase space for adaptation.

Strong community ownership with the plan sitting with Glastonbury Town Council.

Community Voices

What community leaders say about Act to Adapt

Engaged with our community and uncovered all of the people who are already busy working for nature to create a plan that amplifies those efforts.

Zara Aitken | Minehead and Coast Development Trust

"Catalyst for action"

Listening to our neighbours' towns and linking up... it's good to do it together with knowledgeable and passionate people.

Indra | Glastonbury

"Community, Science focus,
Plan"

Sustainable Wells and Wells City Council have set up a Memorandum of Understanding to run 12 workshops. Ecoweek launching A2A.

Denise | Wells Environment Network

"Supports, Guides, Enables"

Ingredients for Success



Trusted relationships

Building connections with community anchors before starting the formal process. Understanding who the informal leaders are.



Meet people where they are

Consulting at flower shows, festivals, and local events. Not expecting people to come to us.



Hope over anxiety

Focusing on tangible actions and nature-based solutions. When people see what they can do, empowerment increases.



Community ownership

The plan belongs to the community, not to SWT. We facilitate, they lead. Seed funding gives them agency from day one.



Consistent framework

Standardised process across all plans, but with locally relevant content. Allows comparison while respecting local difference.



Partnership working

Collaborating with Somerset Rivers Authority, Somerset Council, FWAG SW, Environment Agency, and local town councils.

Climate Adaptation Summit

Connecting communities for horizontal knowledge sharing

What is it?

An annual event bringing together community leaders from across all Act to Adapt communities, and groups ready to start the journey.

A space where communities learn from each other directly, sharing what's worked, what hasn't, and building real connections across Somerset.



Why It Matters

Communities sustain momentum by staying connected to others on the same journey.

New communities hear directly from those who've been through the process.

Builds a growing network of climate adaptation leaders across Somerset.

Investment and Resources Needed

What the Process Needs

People

Dedicated officers to facilitate the full Talk, Shape, Act process, plus ongoing support and relationship management after handover.

Resources

Climate Adaptation Toolkit and materials, venue hire and event costs for workshops and launch events, and staff time for data analysis and plan design.

Funding

£1,000 seed funding per community to kickstart adaptation action.

Biggest Challenges

Funding and capacity

Community leaders consistently cite this as their biggest barrier to implementing plans.

Sustaining momentum

Motivating commitment over time after the initial energy of the process.

Reaching underrepresented groups

Young people, families, and those who don't typically engage with climate issues.

Changing systems

Embedding community plans within local authority planning frameworks.

Scaling Up and Collaboration

How the MACC Hub ecosystem can help

What We're Doing Next

Embedding in policy

With the MACC Hub, University of Bristol, and Somerset Council.

Scaling across the UK

Through accessible toolkits so communities can develop their own plans independently.

Reaching new audiences

Through arts based engagement, storytelling, and creative methods.

Growing across Somerset

Frome, Chard and Mudford in progress and more communities requesting support.

How You Can Help

Help fund it.

Dedicated officer time and seed funding for communities.

Help embed it.

Support local authorities to recognise and integrate community adaptation plans into policy.

Help spread it.

Connect us with communities and organisations who want to replicate the process.

Help champion it.

Advocate for community voices in national adaptation policy.



Somerset
Wildlife Trust

Can we answer your questions?

Get in touch:

natalie.barnett@somersetwildlife.org